



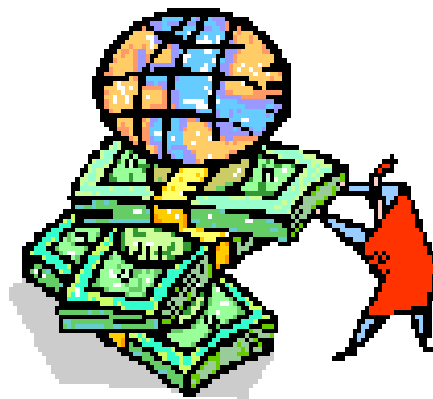
Viking Scholarships 2009-2010



Scholarship Guide



- ✚ Find local scholarships
- ✚ Find national scholarships
- ✚ Learn to find university scholarships
- ✚ Easy index to scholarships in the file drawer



Scholarship Rules

*Save yourself time and frustration.
Read these rules first.*

Listings for all scholarships follow this page.

How do I find scholarships?

There are three main sources for scholarships:

- Every university in the United States offers scholarships. Contact the schools to which you are applying for their own lists. These lists are usually only available from the universities.
- Screen yourself for over 150,000 scholarships. If you have Internet access, the address is www.collegezone.com. Follow the links to “Scholarships.” DO NOT pay anyone for scholarship lists. Check the “Scholarships” portion of our website for the newest information and for other scholarship searches.
- Use this booklet to locate all local scholarships for which we receive applications in the Student Services Office. See Mr. Baima if you have questions.

What else do I need to know?

- Deadlines change! The ones listed in this booklet are the deadlines used last year.
- This is only the tip of the scholarship iceberg. This booklet lists only local scholarships for which we receive applications at the high school.
- Don't pick up a scholarship application the day before the published deadline. Transcripts and recommendations require a minimum of five- (5) days' notice.
- Scholarships are listed by the month in which we received them.
- Financial need is considered for many, but not all, scholarships.
- New scholarships are listed on the website (go to the section on College and Career).
- Don't count on getting any one particular scholarship. Apply for several.

- Some applications listed in this booklet are available in the Student Service Office. Most can be downloaded from the internet.
- We do not control these organizations. They may send the applications at different times or change the criteria. We will give you the telephone number of the contact person for that scholarship if your student asks for it.
- Check our website for news on scholarships, financial aid, and college searches. The address is www.fhs.d211.org.
- A great source for financial aid information is the website sponsored by the Illinois Student Assistance Commission. The address is www.collegezone.com.

Scholarships received during September

Sponsor	Value	Criteria	Deadline
AXA Achievement Award	to \$10,000	Demonstrated achievement in non-academic activity; first 12,000 applications received will be considered www.axa-achievement.com	December 15
Harper College	To full tuition	Scholarships available from many academic departments; applicants to the college are screened automatically; contact Harper College Financial Aid for more information. APPLY EARLY!!!	February 1
Horatio Alger	to \$10,000	Students with financial need who have overcome adversity http://www.horatioalger.org/scholarships	October 30
American Health Center	\$250	Students pursuing a career in a health field	June 15
Joseph Blazek	\$500 and up	Students majoring in any science or engineering field; financial need is a criterion	March 15
Ron Brown	\$10,000	African-American; leadership; grades; community service www.ronbrown.org	January 9
Coca-Cola	\$4,000	Grades; community service; leadership www.coca-colascholars.org	October 31
Daughters of the American Revolution	Varies	One scholarship for American History majors; one scholarship for students attending Illinois schools; financial need is considered	January 16

Eastern Illinois University	\$1,000	Top 10% of class; ACT 27+	February 2
Elks Foundation	Varies	Students who plan careers in either physical therapy or occupational therapy; financial need is considered www.elks.org	January 29
Gates	Varies	Minority students; 3.3+ GPA; financial need http://www.gmsp.org	January 11
Golden Apple Foundation	\$18,000	Future teachers who agree to teach in areas of social need for 5 years www.goldenapple.org	November 30
Hearst Foundation	\$5,000	Interest in government service http://www.hearstfdn.org/ussyp	October 4
Indiana University	Full tuition	Excellent grades and leadership; two students can be nominated from Fremd	September 19
John F. Kennedy	\$3,000	Essay on government service www.jfkcontest.org	January 8
Miami University (Ohio)	Full tuition	Grades; activities; interview; ACT/SAT; applications available from the university	November 1
National Peace Essay	To \$10,000	Peace-related topic http://www.usip.org	January 26
Northern Illinois University-Academic Finalist	To full tuition	Should have a 27+ ACT and be in the top 5% of the class. Awards range to full tuition	February 1
Northern Illinois University-Education	\$1,000	Teacher education majors	February 1
Pilchard	\$8,000	3.0+ GPA and some financial need; renewable; must attend an Illinois school (public or private)	November 15
Pullman Foundation	\$200-\$5,000	Grades; activities; financial need- for this one, must qualify for free lunch program	October 27
Purdue University	\$2,000	3.3+ GPA in math and science; 26+ ACT or SAT verbal 580+ and SAT math 680+; others available for minorities http://www.cla.purdue.edu/students/scholarships/	February 15
Society of Automotive Engineers	Varies	Engineering careers	December 1
Tall Clubs	\$250-\$1,000	Grades; women over 5'10" or men over 6'2" http://www.tallclubchicago.org/	January 15

University of Iowa	Full tuition	Top 5% of the class or 3.9+ GPA; ACT 30+ or SAT 1270+. Other scholarships available for minorities in the top 30% with ACT 25+ or SAT 1020+	December 10
University of Virginia	Full	1 nomination from Fremd; 1400+ SAT/30+ ACT; top 5%	October 14
Washington Crossing	\$5,000	Careers in government service www.gwcf.org	January 1
Washington University	to full tuition	Grades; leadership; outstanding students; Danforth Scholarship- see counselor or website for nomination materials	October 15

Have you read the instructions page?

Scholarships received during October

Sponsor	Value	Criteria	Deadline
Boston University	Full tuition	Grades; activities; counselor nomination www.bu.edu/admissions/trustee	December 1
DeVry University	\$3,000	Top third of the class	None specified
Holocaust Foundation	To \$5,000	Essay contest based on furthering the study of the Holocaust http://holocaust.hklaw.com	May 1
Illinois Society of Professional Engineers	\$800-1,000	3.5+ GPA; engineering careers http://homepage.interaccess.com/~hartwell or www.ilspe.com	March 1
Jaycees	\$1,000	Community service www.ijcf.org/scholar.html	December 1
McKelvey Foundation	\$10,000	Young entrepreneurs who own a business http://www.mckelveyfoundation.org/mckelvey/	January 25

Northern Illinois University-Centennial	\$1,000	Top 10% of class; 25+ ACT	February 1
Ayn Rand	\$500-\$5,000	Essay based on familiarity with Rand's novels www.aynrand.org/contests	April 1
Riceland	\$2000	Chicagoland senior; essay; http://www.riceland.com/scholarship	February 16
Willow Bend Elementary Alumni Scholarship	Varies	Applicant must have attended Willow Bend for at least 2 years, Essay, Letter of Recommendation	April 13

Order transcripts at least 5 days in advance.

Scholarships received during November

Sponsor	Value	Criteria	Deadline
AMVETS	\$500	Parent must be a veteran www.amvets.org	March 1
B'nai B'rith Sports Lodge	\$1,000	Jewish faith; varsity athlete; financial need	February 5
Burger King	\$1,000	GPA 2.5+; work 15 hours weekly at any job (does not have to be at Burger King); only one nominee can be submitted from Fremd	December 6
Robert Byrd	\$1,500	Top 2% of class and 30+ ACT; no application-eligible students are notified by the Illinois Student Assistance Commission in the spring	January 15
Education is Freedom	to \$5,000	3.0+ GPA; some financial need www.educationisfreedom.com	January 31
MENSA	\$200-\$1,000	Essay contest <i>Email: scholarship@chicago.us.mensa.org</i>	December 31
Ronald McDonald House Charities	\$1,000	Grades, leadership, financial need www.rmhc.org	February 15
Military Children	\$1,500	Available to children of retired military veterans, reservists, or active duty members www.militaryscholar.org	February 22

Monsanto Imagine	\$1,500	Designed for agriculture students but also has options for conservation and food science majors www.monsanto.com	February 15
Northrop Grumman Scholars	\$10,000	Engineering majors who reside in Palatine, Rolling Meadows, or Arlington Heights click here/	April 30
University of Illinois- Chicago	Full tuition	Top 15% of class; ACT 28+	March 1
Wal-Mart	\$1,000	Students should have a minimum G.P.A. of 2.5, community service, and some financial need www.walmartfoundation.org	January 12

Scholarships do not all arrive on the first day of each month.

Scholarships received during December

Sponsor	Value	Criteria	Deadline
B'nai B'rith Sports Lodge	\$1,000	Jewish faith; varsity athlete; financial need	February 3
Bonnie Greenberg	\$1,500	Special education student	January 31
Chicago Wolves	one semester tuition	Essay based on an obstacle that a student has overcome	March 7
Hispanic Heritage	\$2,000	Hispanic students based on grades, leadership www.hispanicheritage.org	February 2
Illinois Council for Exceptional Children	\$500	Scholarship for students with a documented learning disability or other special education need.	March 9
National Guard	Tuition	Full tuition at any Illinois state-supported university	None specified
Northern Illinois University	Full tuition	African-American or Hispanic; top 33% of class; ACT 22+	February 1
Odd Fellows	\$500-\$1,000	"C" average minimum; financial need www.ioof-il.org	March 1

Panhellenic	\$2,000	Attend a college that has sororities (do not have to join)	March 19
Roosevelt University	Full tuition	Top 25% of class	March 1
Schaumburg PTA	Varies	District 54 graduate; top 30% of high school class; separate scholarship for Harper college or trade school- top 50% of class	January 31
Special Education Teachers	Full tuition	Tuition waiver at any Illinois state-supported university for special education teaching majors www.collegezone.com	March 1
Teacher Education Scholarships	Full tuition	Future teachers with minority ethnic backgrounds and future teachers who could teach in specified teacher shortage areas should consult our state website for details on these programs. www.collegezone.com	March 1
University of Illinois-Children of Veterans	Tuition	Must be used at University of Illinois at Chicago or Champaign; parent a veteran	March 1

Order transcripts at least 5 days in advance.

Scholarships received during January

Sponsor	Value	Criteria	Deadline
American Society for Quality Control	\$1,000	Essay based on inventory and quality control theories	March 1
Best Buy	\$500	Grades; activities; leadership; applications at stores Open to all Grade levels www.bestbuy.com/scholarships	February 15
Carpe Diem	\$5000	Service to the community http://www.carpediemfoundation.org/	May 1
Chemical Industry Council	\$1,000	Essay on chemistry www.cicil.net	March 3
Colonel's Challenge		2.75+ GPA; must attend a public university in Illinois www.kfcscholars.org	February 10

Congressional Hispanic Caucus	Varies	Call 1-800-392-3532 for scholarships for Hispanic students www.chci.org	March 1
Delta Sigma Theta	\$1,000	African-American students with at least a 2.5 or better GPA may apply	February 10
Epilepsy Foundation	\$1,000	Must have epilepsy; some financial need considered www.epilepsy-chicago.org	March 31
Japanese-American Citizens League	\$300- \$1,200	Japanese descent	March 1
Lillian Glover (PTA)	\$500-\$1,000	Top 25% of class; teaching careers www.illinoispta.org	March 1
Inverness Women's Club	\$1,000	Grades; financial need	March 17
Jack and Jill	\$1,500	African-American students	March 13
Kevin Kaplan	\$500-\$5,000	Grades; financial need	March 15
William A. Lee (Chicago Federation of Labor)	\$1,000	Community service; financial need; child of a union member	March 1
National Roofing Foundation	\$2,000	Must attend an Illinois college (private or public); must call NRF for application; ACT 28+ www.erca.org	March 3
Palatine Garden Club	\$500	Interest or major in forestry, horticulture, or related field	April 8
Phi Delta Kappa	\$750- \$2,000	Pursue career in teaching; top 33% of class http://www.pdkintl.org/	February 21
Rotary Club of Rolling Meadows-Academic	\$500	Resident of Rolling Meadows; four-year college	April 6
Rotary Club of Rolling Meadows-Vocational	\$500	Resident of Rolling Meadows; two-year college or technical school	April 6
Rotary Club of Schaumburg-Hoffman Estates	to \$5,000	Students must live in either Hoffman Estates or Schaumburg. Award is based on demonstrated community service	March 31
Bruce Schurman	Varies	Permanent physical disability www.marianjoy.org	April 10
Tzu Chi Scholars	\$1,000	3.0 GPA, Financial Need www.us.tzuchi.org	April 1

United Way	\$1,000	Participation in activities and athletics; grades and community service; some scholarships renewable for four years	March 30
Zonta Club	\$750	Female; activities; service www.zonta.org	March 20

**Scholarships do not all arrive on the first day
of each month.**

Scholarships received during February

Sponsor	Value	Criteria	Deadline
Access to Education	\$1500	Minority students usafunds.org	April 15
Alpha Kappa Alpha	to \$1,000	Grades; extracurricular activities; African-Americans	April 22
Association of Illinois Township Committees on Youth	\$500	Major in social sciences; service to community	April 13
AXA-Achievement Scholarship	\$2,000	Essay reflecting how a student has overcome adversity to achieve success	March 25
Carrie Burke Foundation	\$3,000	Essay regarding how your life has impacted others www.carrieburkefoundation.org	March 31
Chicago Area Business Aviation Association	\$2500	Applicant must be majoring in an aviation related field www.cabaa.com/HighSchoolApps.html	April 20
William J. Cook Scholarship Fund	Varies	Male students, Academics, Financial need	April 1
District 211 Foundation	Varies	Many scholarships are sponsored by families through our Foundation. See the listings on this page for specifics or go to the school district web page [Application]	March 20
District 211 Teachers Union	\$1,000	3.2+ GPA; one Fremd student wins	March 1
Karen Doehring (Family and Consumer Sciences)	\$400	Students planning college study or a career in any field within Family and Consumer Sciences	March 1
Fischetti Award	\$1,500	Italian descent; 3.0+ GPA; major in Communications or Journalism	April 15

Garden Club of Inverness (Reseda)	\$1,000	Environmental or forestry careers	April 1
General Assembly	Full tuition	Must use at a state university in Illinois; request application from Illinois legislator in your district	April 20
Good Shepherd Hospital	\$1,000- \$1,500	Health careers	May 3
Hoffman Estates Athletic Association	\$500	Former participant in sports program	April 30
Illinois Association of County Officials	\$500 + \$1,000	Must attend an Illinois school, two-year or four year	March 4
Illinois Hospital Association	\$1,000	Nursing or other health-related careers in two-year colleges http://www.ihatoday.org/membership/volunteers/scholarapp.pdf	April 15
Illinois Lumber and Material Dealers	\$500- \$2,000	Students pursuing careers in these areas	April 1
Illinois Sheriffs' Association	\$500	Grades; scholarship can be used for tuition at state-supported schools in Illinois http://www.ilsheriff.org	March 15
Jiffy Lube	\$7500	Grades; essay http://www.yourturn2apply.com/illinois.htm	April 17
Joint Civic Committee of Italian-Americans	\$1,500	Women of Italian descent; 3.75+ grade-point average; Men of Italian descent	March 25; May 29
Kohl's	\$1,000	Exceptional volunteer service http://www.kohlscorporation.com/	March 15
Mayor of Schaumburg	\$1,000	Resident of Schaumburg; some financial need http://www.ci.schaumburg.il.us/vos.nsf/schaumburg/MJFT-6LUT2J	March 31
George Mougolias Memorial Foundation	\$1500	Grades, ACT, 2 letters of recommendation	March 16
Order of Ahepa	\$1,000	Hellenic descent; 3.0+ GPA	March 15
Palatine Lions Club	\$750	Hearing-impaired or sight-impaired or work with these groups; see your counselor or Mr. Cleary	March 20

Park National Bank	\$2,000	Financial need	April 4
Palumbo Family Foundation	\$500-5000	Financial need; www.palumbofoundation.org	April 30
Society of Women Engineers	Varies	Women who pursue careers in engineering or computer science www.societyofwomenengineers.org/chicago/scholarship.html	March 15
Robert Gregory Swedo Scholarship	\$1,000	Student must attend University of Illinois at Urbana. Scholarship is renewable for four years.	March 20
Viking Boosters	\$1,000	Grades; extracurriculars; applications mailed to all seniors	March 20
Will to Win	Varies	Students with asthma eligible in different areas http://www.yourturn2apply.com/illinois.htm	April 30

Order transcripts at least 5 days in advance!

Scholarships received during March & April

Sponsor	Value	Criteria	Deadline
Jesus Guadalupe	\$1000	Hispanic heritage; 3.0+ GPA; financial need www.jesusguadalupefund.org	June 1
Hoffman Estates Athletic Association	\$500	Applicants must have participated in Pop Warner or Cheer for 2 years. Grades, Activities, Essay	April 30
Illinois Counseling Association	\$350	Students planning careers as teachers, counselors, social workers, or psychologists www.ilcounseling.org	May 5
Emil Jones	\$1000	Financial need	June 15
Julie Lehman	\$500	Journalism majors; 3.8+ GPA; financial need www.cook.k12.il.us	May 26
Palatine Chamber of Commerce	\$1,000	Leadership and school service; must be nominated by a member of the Palatine Chamber of Commerce	April 16
Palatine Jaycees	\$1,000	Grades; leadership; must live in Palatine or Inverness www.palatinejaycees.org or see Mr. Baima	April 2

Palatine Masonic Lodge	\$500	One winner from Fremd; can be used at 2-year or 4-year schools; grades, service are criteria	April 30
Palatine Rotary Club	\$1,000	One Fremd student attending Harper College or vocational school will win	May 3
Rotary Club of Schaumburg-Hoffman Estates	Varies	Leadership, community service, and high grades	March 31
SALUTE	\$1,000	One scholarship will be awarded to a Fremd student based on an essay about service and sacrifice. www.usasalutes.org	April 30
Southern Illinois University-Legacy	\$1,000	Immediate family member attended SIU www.siualumni.com/pulliam	April 6
Upakar	\$2,500	Indian descent; financial need http://www.upakar.org/	April 27
Woodfield Area Charity Organization	\$1,000	Grades; leadership; community service; open only to students from Fremd and Palatine High Schools www.waco4kids.org	April 16

Scholarships do not all arrive on the first day of each month.